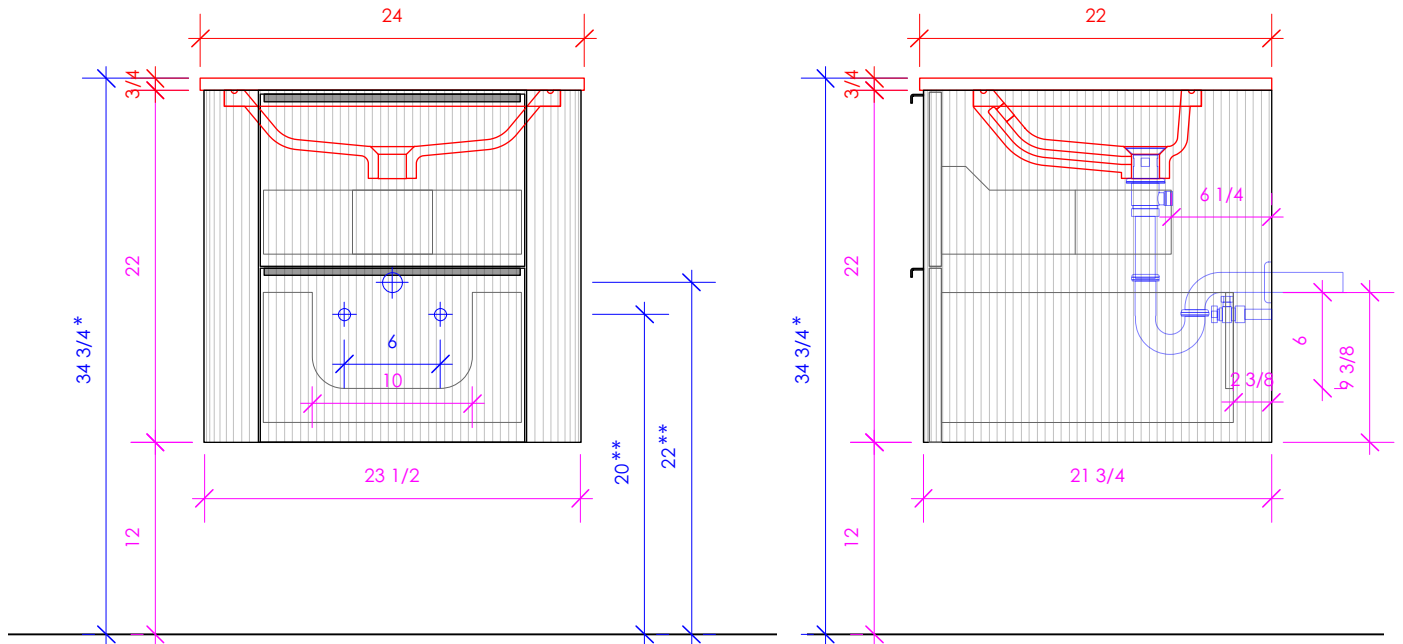


# LACAVA

## GOLDENSHIRE

GDS-W-24



\* Recommended installation height  
 \*\* Recommended plumbing location

### FEATURES:

- WALL MOUNT VANITY
- TAMBOUR DETAILING
- ROUNDED CORNERS
- TWO DRAWERS WITH SOFT-CLOSE GLIDES
- DRAWER BOX STAINED TO REFLECT EXTERIOR FINISH
- DECORATIVE HARDWARE **K131** INCLUDED AND INSTALLED. PLEASE SPECIFY HARDWARE FINISH. CAN BE REQUESTED TO BE WITHOUT HARDWARE.
- USED WITH **GDS-24T** COUNTERTOP AND **5448** SINK OR **K24-FLT** (SOLD SEPARATELY)
- MOUNTING: FRENCH CLEAT (INCLUDED) (SEE FURNITURE MANUAL)
- PROUDLY HANDMADE IN THE USA
- MANUFACTURED WITH LOW VOC FINISHES AND WOOD FROM RENEWABLE FORESTS

### FINISHES:

#### WOOD:

##### STANDARD:

01 - WHITE MAPLE  
 02 - NATURAL CHERRY  
 07 - NATURAL WALNUT  
 24 - CLASSIC WALNUT  
 20 - ASH GRAY  
 06 - WENGE

##### PREMIUM:

47 - SMOKY WALNUT  
 31 - WHITE OAK  
 41 - NATURAL OAK  
 48 - COFFEE OAK  
 43 - GRIGIO OAK  
 49 - BLACK OAK

08 - MATTE WHITE  
 16 - MATTE BLACK  
 35 - MATTE ARDESIA  
 54 - MATTE TAUPE  
 42 - MATTE OLIVE GREEN  
 39 - MATTE SAGE  
 28 - MATTE AZURE  
 29 - MATTE CLOUD

#### METALS:

##### METAL:

21 - BRUSHED STAINLESS STEEL  
 10 - POLISHED STAINLESS STEEL  
 44 - MATTE BLACK  
 MW - MATTE WHITE  
 BPW - BRASS POWDER COAT  
 SA - SIENNA

#### LUXURY:

50 - HORIZON BLUE	27 - RUSTIC OAK	46 - DRIFTWOOD
52 - SILVER OAK	85 - GLOSS WHITE	*NEWTERRA ONLY*
37 - WEATHERED OAK	86 - GLOSS BLACK	

#### COUNTERTOP: **GDS-24T**

##### STONE:

WH - BIANCO  
 LN - LINAC  
 AN - ATENA  
 GU - GOLD UMBER  
 GR - GRIGIO  
 NM - MARQUINA

##### QUARTZ:

PR - PURO  
 AH - ASH  
 CT - CRETA  
 VN - VENA  
 DN - DUNE  
 NR - NERO

##### SOLID SURFACE:

M - MATTE WHITE  
 G - GLOSS WHITE  
 R - MARMO  
 V - LAVA  
 D - OBSIDIAN  
 C - CREMA

##### CONCRETE:

SND - SAND	BRK - BRICK
SLT - SLATE	MAH - MATCHA
SUN - SUN	GAL - GALAXY
CLY - CLAY	TER - TERRACOTTA
LIL - LILAC	CHL - CHARCOAL
MOS - MOSS	FOR - FOREST
AQA - AQUA	BST - BASALTO

3/4" THICKNESS      3/4" THICKNESS      1/2" THICKNESS

LACAVA reserves the right to revise any dimension or information on this sheet without notice. Dimensions are nominal and may vary within an industry accepted tolerance of 1/4". Cabinets with 'vanity top' sinks are made to the matching sink and dimensions may vary. LACAVA is not responsible for any cutouts, countertops, or furniture made without the actual product or template. Differences in color, grain, appearance, and texture are inherent in all natural woodwork and should be expected. Variances in these qualities are not deemed manufacturing defects and will not be accepted as valid reasons for return or exchanges. Plumbing specifications are only a guideline and may need alteration based on application.

6630 WEST WRIGHTWOOD  
 CHICAGO, IL 60707

PH: 773-637-9600  
 FAX: 773-637-9601

LACAVA.COM  
 INFO@LACAVA.COM