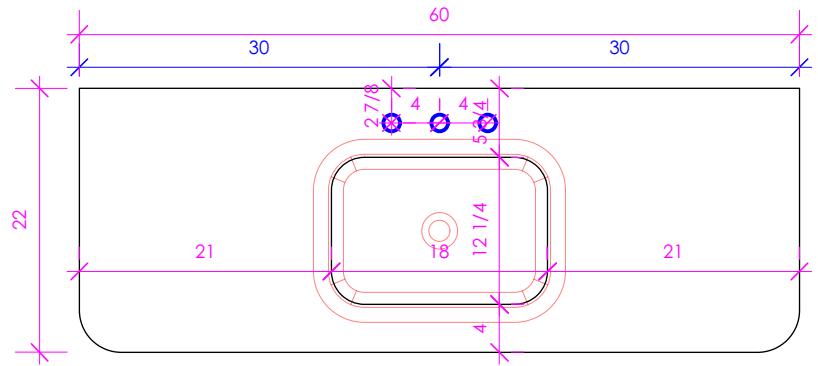


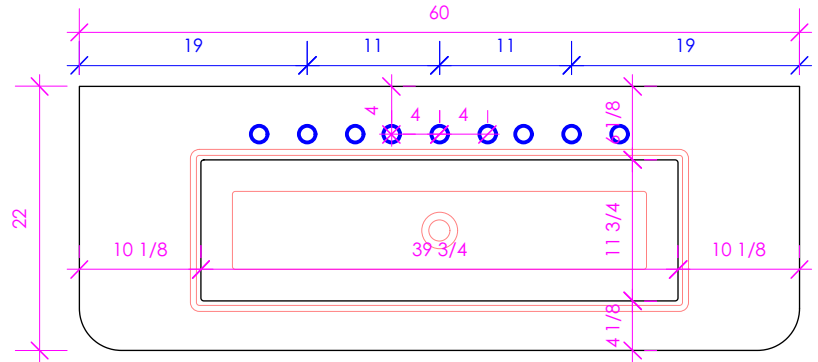
# LACAVA

## FLUTTI

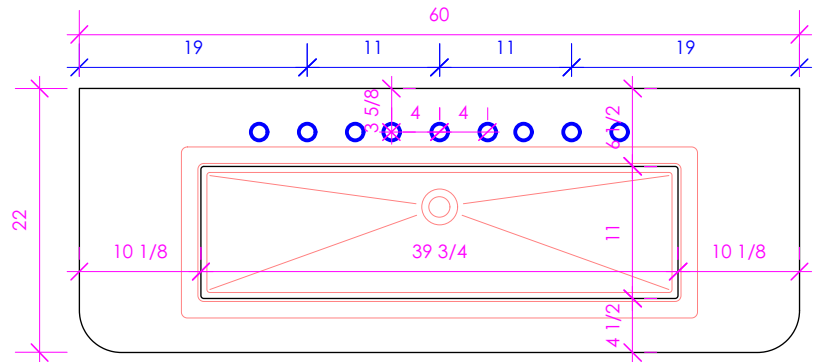
FLT-60ST



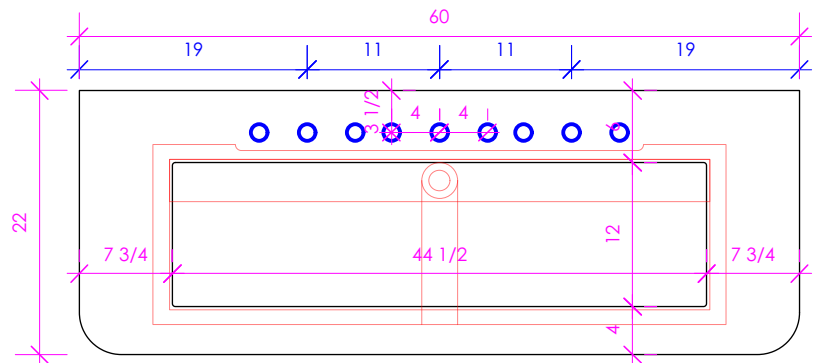
SHOWN WITH H270



SHOWN WITH 5260



SHOWN WITH CT58UN



SHOWN WITH H264UN

### FEATURES:

- EASED EDGES
- USED WITH H270, 5260, CT58UN, OR H264UN SINK (SOLD SEPARATELY)
- PLEASE SPECIFY SINK
- PLEASE SPECIFY FAUCET HOLE CUTOUTS
- PROUDLY HANDMADE IN THE USA

### COUNTERTOP: FLT-60ST

STONE:	SOLID SURFACE:	CONCRETE:
WH - BIANCO	M - SATIN WHITE	SND - SAND
LN - LINAC	G - POLISHED WHITE	SLT - SLATE
SL - ATHENS	R - MARMO	TIER - TERRACOTTA
	V - LAVA	CHL - CHARCOAL
QUARTZ:	D - OBSIDIAN	SUN - SUN
PR - PURO		CLY - CLAY
AH - ASH		LIL - LILAC
		MOS - MOSS

LACAVA reserves the right to revise any dimension or information on this sheet without notice. Dimensions are nominal and may vary within an industry accepted tolerance of 1/4". Cabinets with 'vanity top' sinks are made to the matching sink and dimensions may vary. LACAVA is not responsible for any cutouts, countertops, or furniture made without the actual product or template. Differences in color, grain, appearance, and texture are inherent in all natural woodwork and should be expected. Variances in these qualities are not deemed manufacturing defects and will not be accepted as valid reasons for return or exchanges. Plumbing specifications are only a guideline and may need alteration based on application.