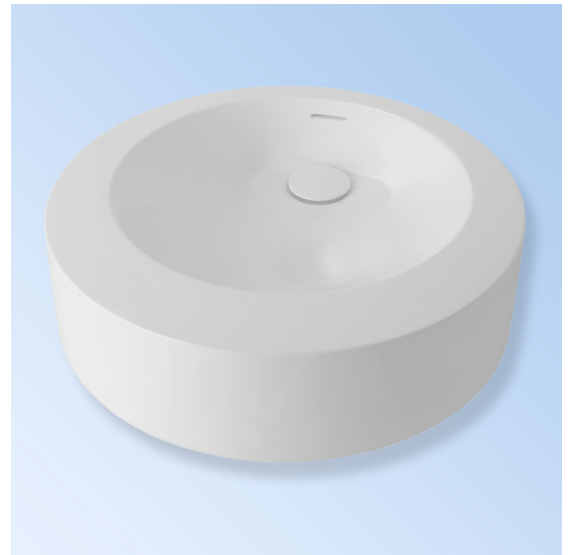


Specifications:

Installation:	Vessel
Exterior Dimensions:	Ø 17 3/4" x 5 3/4" h
Material:	Solid surface
Weight:	20 lbs
Overflow:	Yes
Finishes:	M - Matte white G - Gloss white
Faucet Holes:	00 - no hole 01 - one centered hole
Cut-out Size:	15" x 8" (template available upon request)
Faucet Hole Size:	Ø 1 3/8"
Drain Hole Size:	Ø 1 3/4"



Features:

- Solid surface sink with overflow
- Material is stain, scratch, chemical, and impact resistant
- Designed by Paolo Demarco
- Finished exterior
- Finished bottom

Codes + Standards:

- Meets and exceeds applicable national codes and standards



compliant when installed to specific requirements of this regulation

Recommended Items:

- European drain with overflow
 - 7100-16OF

Care + Maintenance:

- To prevent damage to the solid surface material, hot objects and open flame should not be placed in direct contact with the surface

[Click Here](#) to find out more about proper care and maintenance

