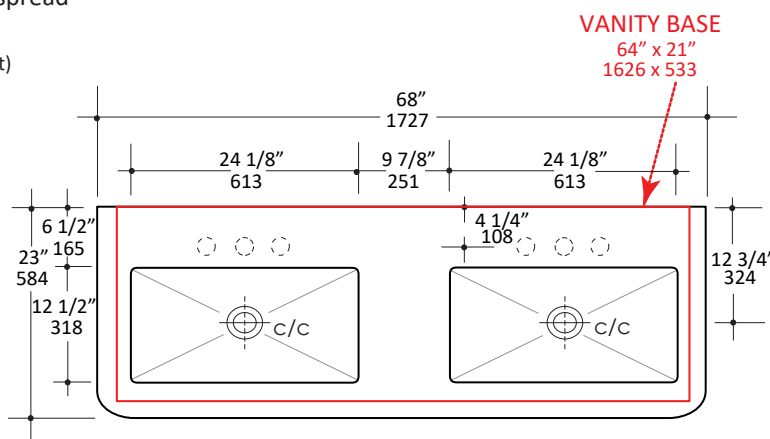


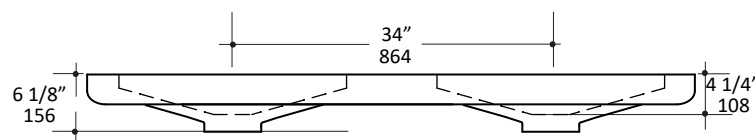
Installation:	Vanity-top
Interior Dimensions:	24 1/8" w x 12 1/2" d x 4 1/4" h
Exterior Dimensions:	68" w x 23" d x 6 1/8" h
Material:	Concrete
Weight:	230 lbs
Overflow:	No
Finishes:	TER - Terracotta SLT- Slate CHL - Charcoal SND - Sand
Faucet Holes:	00 - no hole 01 - one centered hole 02 - two hole - center and right, 4" spread 03 - three hole, 8" spread
Vanity Base Size:	64" x 21" (template available upon request)
Faucet Hole Size:	Ø 1 3/8"
Drain Hole Size:	Ø 1 3/4"



- Concrete double sink without overflow
- European drains only
- Current cut-out template can be requested
- Size can be customizable upon request (conditions apply)

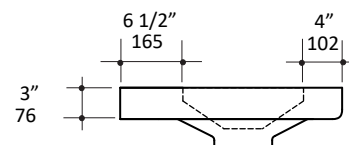


- Meets and exceeds applicable national codes and standards



- Drain options
 - 7100-13
 - 7100-15

- Due to the nature of concrete material, please do not over tighten the drain and other hardware as it may cause the sink to chip or crack [Click Here](#) to find out more about proper care and maintenance of concrete



LACAVA | CHICAGO, IL, USA | 773.637.9600 | info@lacava.com | www.lacava.com