

## Specifications:

<b>Installation:</b>	Vessel
<b>Interior Dimensions:</b>	Ø 15 5/8" x 4 5/8"h
<b>Exterior Dimensions:</b>	Ø 17 7/8" x 6 7/8"h
<b>Material:</b>	Concrete
<b>Weight:</b>	52 lbs
<b>Overflow:</b>	No
<b>Finishes:</b>	TER - Terracotta MOS - Moss MAH - Matcha BST - Basalto SLT - Slate LIL- Lilac AQA - Aqua CHL - Charcoal CLY - Clay GAL - Galaxy SND - Sand SUN - Sun BRK - Brick
<b>Cut-out Size:</b>	Ø 8" (template available upon request)
<b>Faucet Hole Size:</b>	N/A
<b>Drain Hole Size:</b>	Ø 1 3/4"



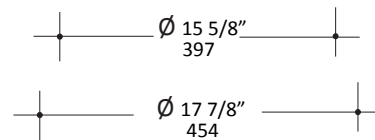
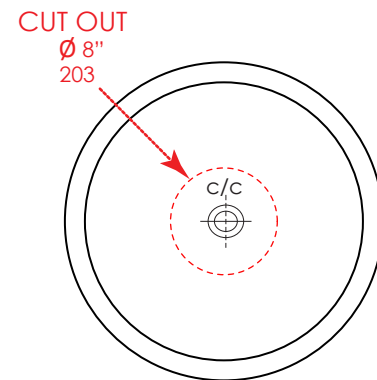
## Features:

- Concrete sink without overflow
- Size can be customized upon request (conditions apply)
- Optional detailing
  - CT-P1 (Fluttini)

## Codes + Standards:

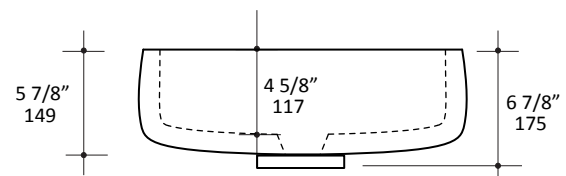
- Meets and exceeds applicable national codes and standards

**ADA** compliant when installed to specific requirements of this regulation



## Recommended Items:

- Drain options
  - 7100-13
  - 7100-15



## Care + Maintenance:

- Due to the nature of concrete material, please do not overtighten the drain and other hardware as it may cause the sink to chip or crack  
[Click Here](#) to find out more about proper care and maintenance of concrete

LACAVA reserves the right to revise any dimension or information on this sheet without notice. Dimensions are nominal and may vary within an industry accepted tolerance of 1/4".  
 Drawings provided herein are meant to give the user an idea of the product and are not made to scale.  
 Revised: 06/19/2024