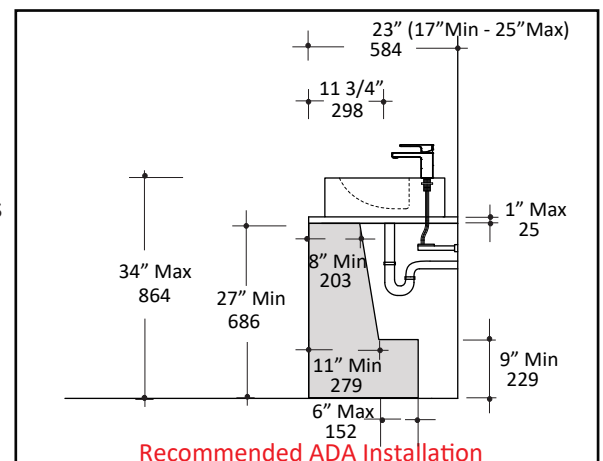
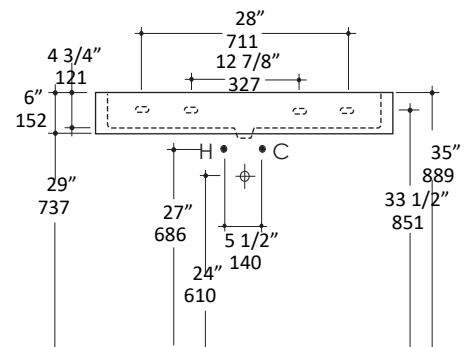
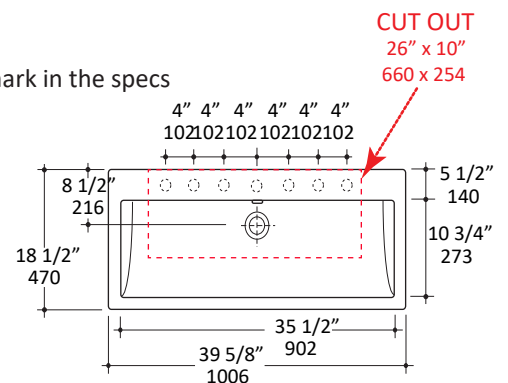



Specifications:

Installation:	Vanity-top, wall-mount, or on-counter
Exterior Dimensions:	39 5/8" w x 18 1/2" d x 6" h
Material:	Porcelain
Weight:	74 lbs
Overflow:	Yes
Finishes:	001 - White
Faucet Holes:	00 - no hole 01 - one centered hole 02 - two hole - center and right, 4" spread 03 - three hole, 8" spread Other holes drilled to order when requested - please mark in the specs
Cutout Size:	26" x 10" (template available upon request)
Faucet Hole Size:	Ø 1 3/8"
Drain Hole Size:	Ø 1 3/4"



Features:

- Porcelain sink with an overflow
- Unglazed back - it must be installed against a wall on the back
- Unglazed bottom
- Wall-mounting bolts are included

Codes + Standards:

- Meets and exceeds applicable national codes and standards



compliant when installed to specific requirements of this regulation

Recommended Items:

- Furniture
 - AQG-BX-40 - Floor-standing metal console stand with towel bars and optional shelf
 - AQG-FR-40 - Floor-standing metal console stand with a towel bar and optional shelf
 - AQG-ADA-40 - Floor-standing metal console stand for ADA-compliant installation, made of stainless steel or brass
 - AQG-W-40 - Wall-mount vanity with 4 drawers and 1 center door
 - LUC-W-40 - Wall-mounted vanity with 2 wide drawers
- European drain with overflow
 - 7100-12
 - 7100-13OF
 - 7100-16OF

LACAVA reserves the right to revise any dimension or information on this sheet without notice. Dimensions are nominal and may vary within an industry accepted tolerance of 1/4".
Drawings provided herein are meant to give the user an idea of the product and are not made to scale. _ Revised: 12/11/2023